

CERTIFICATE OF LOCATION OF GOVERNMENT CORNER

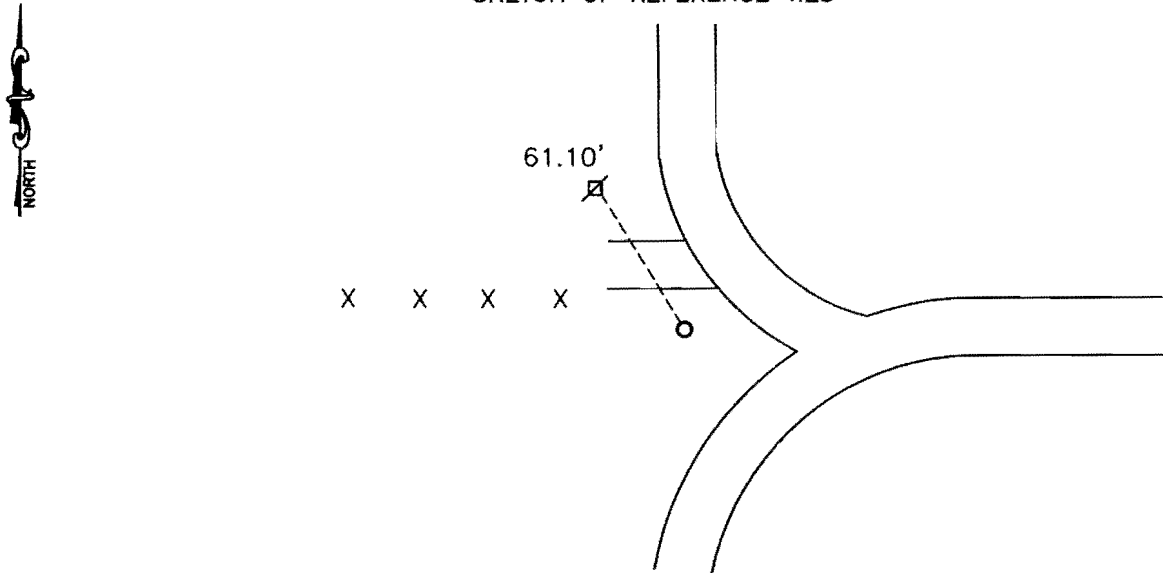
CENTER Corner of Section 8, Township 107, Range 42, 5TH P.M.

STATE OF MINNESOTA, County of MURRAY

At the corner location shown on the sketch:

- On 04-17-2008 found a 3/4" IRON
DATE
- left monument as found, lowered monument, removed monument (explain)
- On _____ placed a _____
DATE

SKETCH OF REFERENCE TIES



Minnesota State Plane Coordinate
System Murray County Datum
NAD83 (1996)

Nail and seal in power pole NW 61.10'

N: 187404.730
E: 461346.145

Statement of evidence relative to this corner location is on back of page.

I hereby certify that this document and the data contained herein was prepared by me or under my direct supervision.

James Benth 10/15/08
SIGNATURE DATE

Registration No. 43844

- Land Surveyor, Professional Engineer
- County Surveyor, County Engineer

OFFICE OF THE COUNTY RECORDER
County of _____

I hereby certify that this document was filed in the Co. Recorders office at _____ .M on the _____ day of _____ A.D. 20 _____

County Recorder James V. Johnson
By OCT 22 2008, Deputy

DOCUMENT NO. _____

Statement of Evidence

In 1945, a concrete stone was set at the center of the section.

In 1963, the Murray County Highway Department found the concrete monument and placed an iron pin above it. It was 9.5 feet south of the fence line to the west.

On April 17, 2008, Bueltel-Moseng Land Surveying found a $\frac{3}{4}$ " iron at the center of the section. It is in line with the centerline of the roads to the north and east. It also is 9.5 feet south of the fence line to the west.